

Congratulations

to St. Luke's University Health Network 2023 Graduating Residents and Fellows!

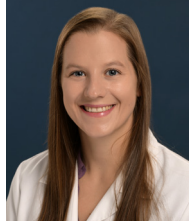


St. Luke's University Health Network proudly celebrates its 2023 Intern, Resident and Fellow graduates – physicians and providers who have completed specialty training through residencies and fellowships at St. Luke's University Health Network. The 31st Annual Graduation Ceremony was held June 16 at the Zoellner Arts Center in Bethlehem.

The following providers will begin practice with St. Luke's University Health Network



Fady Ghattas, MD
Emergency Medicine,
St. Luke's University Health
Network Warren Campus



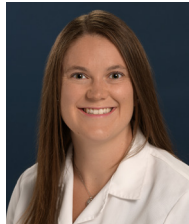
Kelly Joyce O'Brien, MD
Emergency Medicine,
St. Luke's University Health
Network Miners Campus



Matthew Dorcus, DO
Family Medicine,
St. Luke's Nazareth Family
Practice, Nazareth, PA



Cameron Ryan Jacobs, DO
Emergency Medicine,
St. Luke's University Health
Network Warren Campus



Kathryn Alice Wellman, MD
Emergency Medicine,
St. Luke's University Health
Network Warren Campus



Michaela Ortiz, DO
Family Medicine,
Geisinger St. Luke's Pottsville
Primary Care, Pottsville, PA



Simon Koo, MD
Emergency Medicine,
St. Luke's University Health
Network Sacred Heart Campus



Charles Aaron White, MD
Emergency Medicine,
St. Luke's University Health
Network Easton Campus



Allison E. Watts, MD
Wound Care,
St. Luke's University Health
Network, Orwigsburg, PA



**Christopher Armand
Legare, MD**
Emergency Medicine,
St. Luke's University Health
Network Anderson Campus



Emily C. Bilyk, DO
Family Medicine,
St. Luke's North Whitehall
Family Practice, Orefield, PA



Jaap Piyush Patel, DO
Family Medicine,
St. Luke's Hanover Family
Practice, Allentown, PA

The following providers will begin practice with St. Luke's University Health Network *(cont'd)*



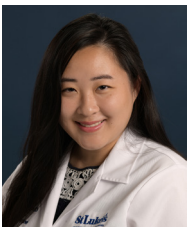
Mursal Sekandari, MD
Family Medicine,
St. Luke's Medical Associates
of Monroe County,
East Stroudsburg, PA



Danika Chari, MD
Family Medicine,
St. Luke's North Hunterdon
Family Practice, Hampton, NJ



Ragarupa Kotala, MD
St. Luke's University Health
Network Upper
Bucks Campus



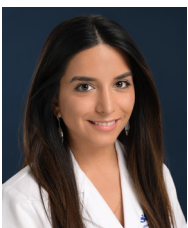
Daisy Ling Zhang, MD
Family Medicine,
St. Luke's Coventry Family
Medicine, Warren, NJ



Christopher Samy, MD
Family Medicine,
St. Luke's Primary Care
Walbert Avenue, Allentown, PA



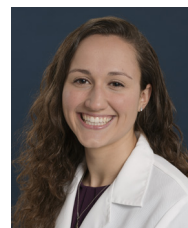
Faran Mansoor, MD
Internal Medicine,
St. Luke's Primary Care,
Orwigsburg, PA



Nina Knedler, MD
Family Medicine,
St. Luke's William Penn Family
Practice, Bethlehem, PA



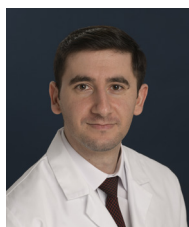
Carmen Dobrovolschi, MD
Internal Medicine,
St. Luke's University Health Net-
work Upper Bucks Campus



Lauren McKay, DO
Faculty, St. Luke's University
Health Network Internal
Medicine Residency,
Bethlehem, PA



**Kourtnei Annae
Hines-Smith, MD**
Faculty, St. Luke's University
Health Network, Sacred Heart
Family Medicine Residency

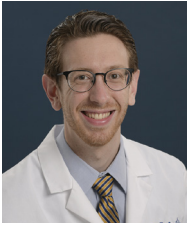


Naif Hindosh, MD
Hospitalist Medicine,
St. Luke's University Health Net-
work Bethlehem Campus



Harnishkumar V. Patel, DO
Internal Medicine,
St. Luke's University Health
Network Bethlehem Campus

The following providers will begin practice with St. Luke's University Health Network *(cont'd)*



Evan Michael Teske, DO
St. Luke's University Health Network Hospice & Palliative Care Fellowship



Adriana Carola Méndez Suárez, MD
St. Luke's University Health Network Neurology Associates, Bethlehem, PA



Kyle Bradley, DPT
Physical Therapy, St. Luke's University Health Network, Nazareth, PA



Ravi R. Vinnakota, MD
Internal Medicine, St. Luke's University Health Network Bethlehem Campus



Indyah Brown, MD
St. Luke's University Health Network Caring for Women, Easton, PA



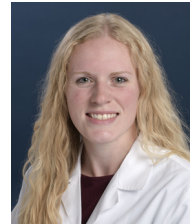
Lindsay Brantingson, DPT
Physical Therapy, St. Luke's University Health Network, Forks, PA



Sidra Omer, MD
Hospitalist, St. Luke's University Health Network Upper Bucks Campus



Chelsea Mary Nemeth, MD
St. Luke's University Health Network Caring for Women, Easton, PA



Mabry Brintzenhoff, DPT
Physical Therapy, St. Luke's University Health Network



Naaima Mufti, MD
St. Luke's University Health Network Neurology Associates, Bethlehem, PA



Kelly Martha Angelucci, DPT
Physical Therapy, St. Luke's University Health Network



Kylie Ann Heath, DPT
Physical Therapy, St. Luke's University Health Network

The following providers will begin practice with St. Luke's University Health Network *(cont'd)*



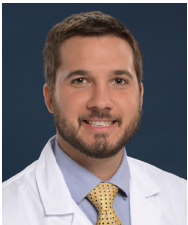
Patrick R. Russell, DPT
Physical Therapy, St. Luke's
University Health Network,
Hellertown, PA



Jordan Holter, DO
Consultation-Liaison Psychiatry,
St. Luke's University Health Network



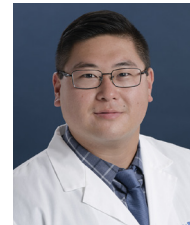
Hussam Tayel, MD
Gastroenterology, St. Luke's Uni-
versity Health Network Monroe
Campus



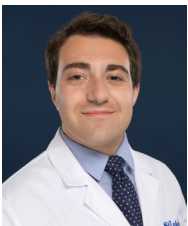
Austin Mishko, DPM
St. Luke's University Health
Network Warren Campus



Stephen Ross Betz, DPT
Staff Physical Therapist, St. Luke's
University Health Network Physical
Therapy, Nazareth, PA



Daren Shiu, DO
Palliative Care, St. Luke's University
Health Network Bethlehem Campus



Joseph Ardolino, DO
St. Luke's University Health
Network



Brian Kim, DO
Gastroenterology, St. Luke's
University Health Network Miners
& Carbon Campuses



Gowtham Narla, MD
Attending, St. Luke's University
Health Network Sleep Medicine
Fellowship

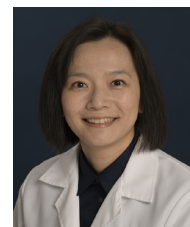
The following physicians will continue their Fellowship training at St. Luke's University Health Network



Erica Lynn Dunn, DO
EMS Fellowship, St. Luke's Univer-
sity Health Network



Jonathan Hoang Tran, MD
Sports Medicine Fellowship, St.
Luke's University Health Network

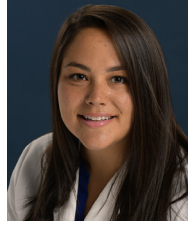


Chen-Ping Yeh Butler, MD
Sports Medicine Fellowship,
St. Luke's University Health Network

The following physicians will continue their Fellowship training at St. Luke's University Health Network (*cont'd*)



Vikas Yellapu, MD
Cardiology Fellowship, St. Luke's University Health Network



Samantha Taylor Rollins, DO
Gastroenterology Fellowship, St. Luke's University Health Network



William Christopher McIntosh, MD
Geriatric Fellowship, St. Luke's University Health Network



Mina Sobhy Shafic Aiad, DO
Hematology/Oncology Fellowship, St. Luke's University Health Network



Brittney Marie Shupp, DO
Gastroenterology Fellowship, St. Luke's University Health Network



Dhruvanshu Rajendrakumar Patel, MD
4th Year Chief Resident, St. Luke's University Health Network Internal Medicine Residency



Timothy Patrick Daly, DO
Pulmonary/Critical Care Fellowship, St. Luke's University Health Network

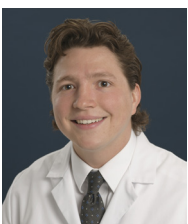


Zhiyuan Ma, MD
Cardiology Research Fellowship, St. Luke's University Health Network Bethlehem Campus



Julia Rose Bold, PharmD
PGY-2 Critical Care Pharmacy Residency, St. Luke's University Health Network

Graduates of Temple/St. Luke's University Health Network School of Medicine include:



Matthew Jay Durkin, MD
Cardiology Fellowship, St. Luke's University Health Network

For a complete list of all graduates, view our Graduation Book (PDF).
Congratulations to ALL our Graduates!