

**St. Luke's University Health Network
News Release**



Congratulations to St. Luke's 2022 Graduating Residents and Fellows!

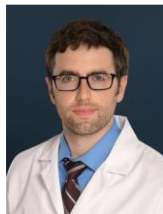
St. Luke's University Health Network proudly celebrates its 2022 Intern, Resident and Fellow graduates – physicians and providers who have completed specialty training through residencies and fellowships at St. Luke's. The 30th Annual Graduation Ceremony was held June 17 at Moravian College Foy Hall. We are proud to have 54 physicians staying here at St. Luke's.

The following providers will begin practice with St. Luke's, or continue their Residencies/Fellowships with St. Luke's –

Natalie Akers, MD

St. Luke's Easton Campus, Emergency Medicine





Matthew T. Heard, MD
St. Luke's, Emergency Medicine



Kathleen A. McMahon
St. Luke's, Emergency Medicine



Matthew Meyers, DO
St. Luke's Miners Campus, Emergency Medicine



Jared A. Paster, DO
St. Luke's, Emergency Medicine



Veronica Petra, MD
St. Luke's Sacred Heart Campus, Emergency Medicine



Jonanthony Gagliardi, MD
St. Luke's Nazareth Family Practice, Family Medicine



Ileana Perez-Figueroa, MD
St. Luke's Rural Family Medicine Residency



Kamaldeep Sethi, MD
St. Luke's Cedar Point Primary Care, Family Medicine



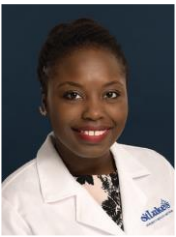
Phuong Ho Lien Pham, MD
St. Luke's Geriatric Fellowship



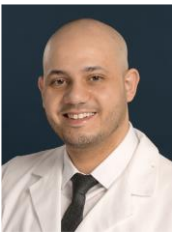
Ali Michelle Polsky, DO
St. Luke's Saucon Valley Family Practice



Daniel Mathew Plavin, MD
St. Luke's Physician Group, Family Medicine



Mame Saye Cisse, MD
St. Luke's Sacred Heart Campus, Family Medicine Residency



Majed Dayoub, MD
St. Luke's Warren Campus, Family Medicine Residency



Molly Karen Sawares, MD
St. Luke's Warren Campus, Family Medicine Residency



Babatunde Segun Sholanke, MD
St. Luke's Star Community Health, Family Medicine



Kathryn Viotto, DO
St. Luke's Urgent Care, Family Medicine



Amanda Leigh Gifford, MD
St. Luke's Surgical Critical Care Fellowship



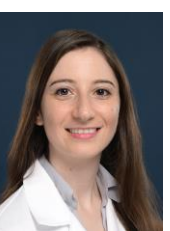
Eluwana Dhanushya Amaratunga, MD
St. Luke's Cardiology Fellowship



Michelle Dyan Andrion, MD
St. Luke's Monroe Campus, Internal Medicine



Emily Buhedo Ernst, MD
St. Luke's Pulmonary Critical Care Fellowship



Rand Hindosh, MD
St. Luke's Monroe Campus, Internal Medicine



James Njoro Kamau, MD
St. Luke's Hematology and Medical Oncology Fellowship



Anish Parameswaran, DO
St. Luke's Monroe Campus, Internal Medicine



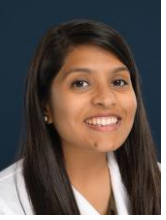
Subin George Chirayath, DO
St. Luke's Gastroenterology Fellowship



Viraj Bakul Patel, DO
St. Luke's Sports Medicine Fellowship



Juan M. Sanchez, MD
St. Luke's Sacred Heart Campus, Internal Medicine



Pooja Mital Saraiya, DO
St. Luke's Hospitalists Group, Monroe Campus, Internal Medicine



Kashyap Shah, DO
St. Luke's Cardiology Fellowship



Israa I. Taha, MD
St. Luke's Internal Medicine Residency



Timothy Richard Vollaro, DO
St. Luke's Warren Hills Family Practice, Internal Medicine



Ana Vivian Concha Chagime, MD
St. Luke's Geriatric Medicine Fellowship



Gowtham Narla, MD
St. Luke's Sleep Medicine Fellowship



Nishit Patel, MD
St. Luke's Gastroenterology Fellowship



Shannon Christine Theobald, MD
St. Luke's Physician Group Caring for Women, Obstetrics and Gynecology



Jennifer Tymon, MD
St. Luke's Minimally Invasive Gynecologic Surgery Fellowship



Quintin Davis, DPT
St. Luke's Hellertown, Physical Therapy



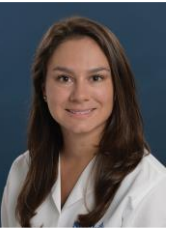
Joseph Farabaugh, DPT
St. Luke's Macungie, Physical Therapy



Danielle Maruice, DPT
St. Luke's Warren Campus, Physical Therapy



Edward W. Milisits III, DPT
St. Luke's Bethlehem Campus, Physical Therapy



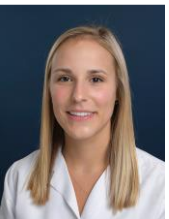
Isabella Rose Scangamor, DPT
St. Luke's Warren Campus, Physical Therapy



Nathan Lifton, MD
St. Luke's Easton Campus, Internal Medicine Residency



Keith Najon Luthuli, MD
St. Luke's Psychiatry Residency



Aspen Trautz, MD
St. Luke's Dermatology Residency



Marc Kervin Antoine, MD
St. Luke's Interventional Cardiology Fellowship



Andrew Michael Curiale, MD
St. Luke's Cardiology Associates



Hammad Bin Liaquat, MD
St. Luke's Gastroenterology Fellowship



Kimberly Joree Wilson, DO
St. Luke's Cardiology Associates



Melissa Ann Hager, DPT
St. Luke's, Physical Therapy

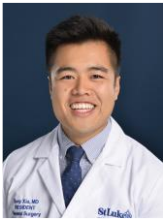


Firas Ido, MD
St. Luke's Bethlehem Campus, Pulmonary & Critical Care Medicine

Graduates of Temple/St. Luke's School of Medicine remaining with St. Luke's include:



Amanda Leigh Gifford, MD
Temple/St. Luke's School of Medicine, 2017



Tony Xia, MD

Temple/St. Luke's School of Medicine, 2017

Saira Nicole Agarwala, MD

Temple/St. Luke's School of Medicine, 2021

For a complete list of all graduates, view our [Graduation Book \(PDF\)](#).

Congratulations to ALL our Graduates!