

St. Luke's University Health Network  
University Hospital (Bethlehem campus)  
Community Health Needs Assessment

Posted: April 15, 2013

## Introduction

The St. Luke's University Hospital has conducted a community health needs assessment (CHNA) pursuant to the requirement of Section 501 (r) of the Internal Revenue Code.

St. Luke's University Hospital commissioned the Lehigh Valley Research Consortium (LVRC) to conduct a CHNA for the Bethlehem campus during calendar years 2011 and 2012. The Lehigh Valley Research Consortium (LVRC) is a Lehigh Valley focused research center, administered through the Lehigh Valley Association of Independent Colleges (LVAIC). Over the last six years, LVRC engaged in meaningful community-based research to inform the community about political, economic, social, health and environmental issues and solutions in a regional context.

Recognizing the growing regional identity of the Lehigh Valley and the interdependence of people, organizations and markets, the Lehigh Valley Research Consortium (LVRC) serves as a resource to improve the lives of residents of Lehigh and Northampton Counties. Through its efforts the LVRC provides Lehigh Valley governments, non-profits and citizens with research and information that facilitates improving the overall quality of life in the region. They provide three primary services for our community:

**Data collection and analysis:** including the creation of a meta-data set of over 300 community indicators at the county, municipal and school district level free to the community.

**Community outreach:** through the collaboration of LVAIC faculty, the LVRC has completed research studies for many local organizations including St. Luke's Hospital and Health Network, Good Shepherd Rehabilitation Hospital, United Way of the Lehigh Valley, Northampton County, the city of Allentown, and the city of Easton. Research reports are available to the entire community on its website: [www.lehighvalleyresearch.org](http://www.lehighvalleyresearch.org).

**Student and faculty development:** The LVRC provides undergraduate and graduate students the chance for hands-on research experience in empirical studies and enhances opportunities for both interdisciplinary and cross-institutional collaboration for faculty and students. University participation in local issues creates possibilities for community members to build relations with faculty and participate in LVRC events held on local college campuses.

Two separate documents comprise the CHNA for the Bethlehem campus:

1. A random survey of Lehigh Valley and portions of Bucks and Montgomery County households
2. An analysis of existing community health measures and secondary data

In addition, key community leaders representing the Bethlehem campus service area participated in a series of four meetings to review the CHNA data, identify and prioritize needs and begin to propose implementation strategies. Minutes from these community meetings are available upon request to interested parties. The participating community leaders and their agency affiliations are:

Dale Kochard, BSME, MBA, Assistant VP Community and Regional Affairs, Lehigh University  
Darla Frack, RN, MSN, NE-BC, CMSRN, Vice President, Patient Care Services, St. Luke's University Health Network, Anderson Campus  
Janet Tate, Supervisor, Grants & Development, Bethlehem Area School District  
Jessica Adams-Skinner, Ed.D., MPH, Director of Community Health, Department of Community Health and Health Studies, Lehigh Valley Health Network  
Jill Pereira, MSW Director, COMPASS Community Schools United Way of the Greater Lehigh Valley  
Judy Maloney, MPH, Director, Bethlehem Health Bureau  
Nancy Kanuck, MSN, RN, Instructor, St. Luke's School of Nursing  
Lorna Velazquez, Executive Director, Hispanic Center Lehigh Valley  
Mary Carr, Administrator, County of Northampton Drug & Alcohol Unit  
Cynthia Max, MSN, Vice President, Operations, St. Luke's University Hospital  
Paul Brunswick, President & Executive Director, Two Rivers & Health & Wellness  
Paul Pierpoint, EdD, Vice President, Division of Community Education, Northampton Community College  
Rose J. Quiles, Case Manager, HepC Unit, Latinos for Healthy Communities  
Ross P. Marcus, M.A., Director of Human Services, County of Northampton  
Vivian Robledo-Shorey, BA, MA, (enrolled in D Ed.) Supervisor of Student & Community Engagement , Bethlehem Area School District  
Dee Darragh, MSED, BSN, NCSN, Easton Area School District, K-12 District Nurse  
Eileen Rugh, BSN, RN, Staff Nurse, St. Luke's University Health Network  
Bonnie Coyle, MD, MS, Director, Community Health Department, St. Luke's University Health Network

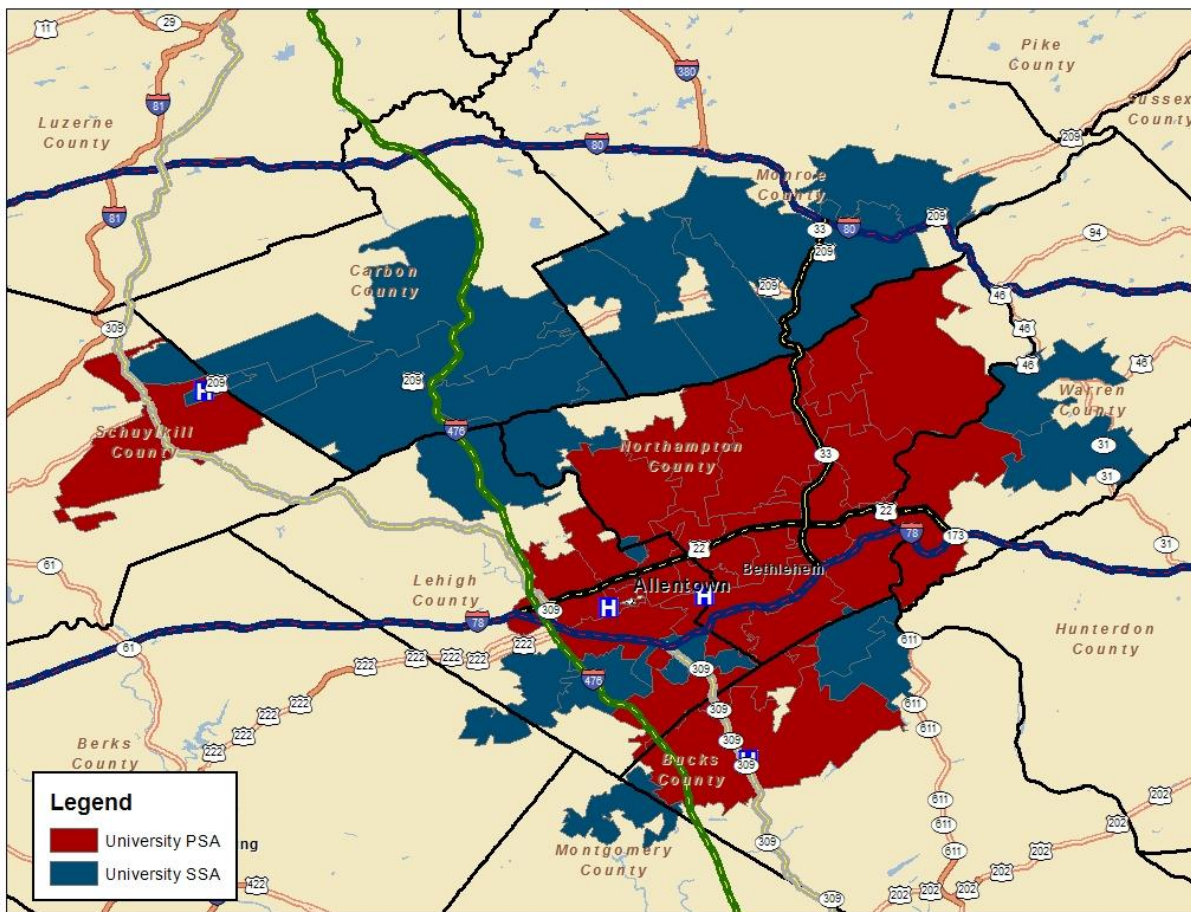
## **St. Luke's University Health Network Mission Statement**

The mission of St. Luke's University Health Network is an unwavering commitment to excellence as we care for the sick and injured; educate physicians, nurses and other health care providers; and improve access to care in the communities we serve, regardless of a patient's ability to pay for health care.

## **St. Luke's University Hospital Service Area**

The community served by St. Luke’s University Hospital is defined based on the geographic origins of the hospital’s inpatient volume. The Primary Service Area (“PSA”) is the geographic area from which approximately 80% of the hospital’s inpatients originate, while the Secondary Service Area (“SSA”) is where an additional 10% of the hospital’s admissions reside.

The PSA is comprised of 23 zip codes in Lehigh, Northampton, Bucks, and Schuylkill Counties in PA along with Warren County in New Jersey. The SSA is comprised of another 23 zip codes which add Carbon, Monroe, and Montgomery Counties, Pennsylvania. In 2012, the Hospital’s PSA included about 583,000 persons and its SSA included an additional 260,400, for a total population of approximately 843,400.



## Identification of Community Health Needs

The CHNA data were reviewed by a Strategic Planning committee consisting of key community leaders and hospital personnel, and the following needs were identified:

- Teen Pregnancy
- Unemployment/under-employment rate and new group challenges
- Child abuse/neglect
- Mental Health – non-emergency and chronic issues
- Quality of Life
- Health Disparities for chronic disease
  - Asthma
  - Diabetes
  - Vision Services
- Nutrition/BMI and Physical Activity
- Dental Care
- Binge Drinking
- Older adults issues
- Chronic Diseases
- Need for a Health Department

### **Explanation for needs not being addressed:**

The priority community health needs to be addressed as part of the Bethlehem Campus Community Health Implementation Plan include:

- Obesity, Nutrition and Physical Activity
- Wellness and Chronic Disease Prevention, including diabetes
- Adolescent Health, including teen pregnancy
- Mental Illness and Substance abuse (Behavioral health)
- Elder Health
- Health Disparities/Health Equity

Current initiatives already exist to address dental health, unemployment/under-employment, and child-abuse and neglect. These initiatives will continue for the next three year cycle as part of ongoing community health programs.

The need for a health department will not be immediately addressed as part of this CHNA and implementation plan. A comprehensive community initiative was launched over the past five years to seek a bi-county health department. SLUHN supported this initiative, had a representative on the bi-county board of health, and the Director of Community Health participated in strategic planning meetings to achieve the goal of creating a bi-county health department. However, county council members in Northampton and Lehigh Counties recently voted down the effort. SLUHN will continue to support community health efforts going

forward, if and when the community assessments indicates a more favorable environment in support of comprehensive local public health.

## **Community Resources**

SLUHN Bethlehem campus has identified the following agencies and programs as potential collaborators for the Implementation Plan:

For all priority areas in the Community Health Needs Assessment, the following agencies will be key partners for the implementation plan:

### All priority health needs

Bethlehem Health Bureau  
Northampton County, Department of Human Services  
Bethlehem Partnership for a Healthy Community  
Bethlehem Area School District  
Easton Area School District  
Catasauqua School District  
Moravian College  
Lehigh University  
Lafayette College  
East Stroudsburg University  
Northampton Community College  
United Way of the Greater Lehigh Valley  
Two Rivers Health and Wellness Foundation  
Easton Hospital  
Auxiliary of St. Luke's University Health Network  
Boys & Girls Clubs of Easton & Southside Bethlehem  
Just Born, Inc.  
Lehigh Valley Health Network  
PA Department of Health

Additional partners for individual priority health needs include:

### Obesity, Nutrition and Physical Activity; Wellness and Chronic Disease Prevention, including Diabetes

Easton, Nazareth and Slate Belt YMCAs  
Local Restaurants participating in St. Luke's Heart Smart program

Local grocery stores  
Delaware & Lehigh Heritage Corridor  
Kellyn Foundation  
Highmark Foundation  
Buy Fresh Buy Local  
Nature Nurture  
Wildlands Conservancy  
American Diabetes Association, local chapters  
American Cancer Society, local chapters  
American Heart Association, local chapters  
Farmer's Markets  
Sodexo  
Second Harvest Food Bank

Mental Illness and Substance Abuse (Behavioral health)

Northampton County MHMR Division  
Northampton County Drug and Alcohol Division  
Family Answers  
Lehigh Valley Mental Health, Inc  
SADD chapters  
AA meetings, groups  
Valley Youth House  
KidsPeace  
Center for Humanistic Change  
Pinebrook Services for Children  
Easton Children's Home  
Local Psychiatrists  
Local Mental Health Counselors  
Turning Point of the Lehigh Valley  
Unity House  
CONCERN  
Crime Victims Council of the Lehigh Valley  
Via of the Lehigh Valley

Adolescent Health, including teen pregnancy

Valley Youth House  
KidsPeace  
Planned Parenthood of Northeastern PA  
Boys and Girls' Clubs of Easton and Southside Bethlehem  
Fund to Benefit Children and Youth

Private Industry Council of the Lehigh Valley/PA Careerlink Lehigh Valley  
Lehigh Valley Child Care  
Lehigh Valley Council for Children  
Lehigh County, Children, Youth & Families and  
Lehigh County Child Advocacy Center

### Elder Health

Northampton County Area Agency on Aging  
Meals on Wheels  
Local Senior Centers  
Gracedale  
United Way Alliance on Aging  
Senior Solutions, Inc.  
Adult Day Cares/Services  
AARP  
VNA of St. Luke's  
Center for Healthy Aging  
Center for Vision Loss  
In-home and Respite Care Centers  
Benefits Check-up  
Bethlehem Housing Authority  
ShareCare Faith in Action

### Health Disparities

Hispanic Center of the Lehigh Valley  
Lehigh Valley Research Consortium  
Community Action Council of the Lehigh Valley  
RENEW Lehigh Valley  
Private Industry Council of the Lehigh Valley/PA Careerlink Lehigh Valley  
Safe Harbor  
Lehigh Valley Dental Hygienists' Association  
Lehigh Valley Dental Society  
Morning Star Rotary  
New Bethany Ministries  
Latinos for Healthy Communities  
Congregations United for Neighborhood Action (CUNA)  
Our Lady of Perpetual Help Church  
Pearle Vision Center, Bethlehem Square  
Richard Ritter Pharmacy  
Rotary Club of Bethlehem  
Second Harvest Food Bank  
Tobacco Free Northeast PA



Trinity Episcopal Church  
Turning Point of the Lehigh Valley  
Unity House  
Health Resources and Services Administration (HRSA)  
Women, Infants and Children Program (WIC)